

Welcome

to the first edition of the Liqmet Digest.

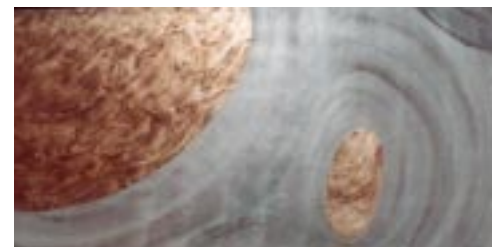
In the past six months, Liqmet has had many developments including the establishment of our official distributors in Seoul and Dubai. Currently, distribution rights in Germany are under negotiation. In addition, new techniques in working Liquid Metals were successfully developed and tested by our designers.



When Metal Meets Color - New Art Directions



Finally, the impossible has become possible. Two substances- metal and paint have been combined together. Any creative ideas can be accomplished in room temperature, without special equipment. The whole production process will take only several hours.



One-off unique metal/ colour artwork can be implemented in variety of styles and sizes to suit both interior and exterior projects.

All finished artworks can be waterproof if desired.



Doors continue to be a showcase for beauty and elegance of what can be achieved with Liqmet Liquid Metals. The pictured door was created in Liqmet Bronze “Modern” finish for a private residence at Elizabeth Bay.



Liqmet is shifting its production towards commercial signage and feature walls.

The Bonnyrigg project for Wetherill Park Council consisted of a decorative composition of abstract three dimensional sea creatures over 30 meters long. This project was created using bronze, copper and iron with rust or patina finishes.

Engraving Made Easy and Inexpensive



Timbercrete Plate opted to use Liqmet liquid platinum on PVC rather than a solid metal sheet, which dramatically reduced their manufacturing expenses. Using Liqmet Liquid Metal Technology the cost reduction starts from around 50%.

Rusty in minutes

With Liqmet Liquid Metal Technology, rusted surfaces can be achieved within minutes.

Adlibitum and Versatile Signs featured an aged iron base and shiny platinum letters on top create modern retro feel for these projects.

